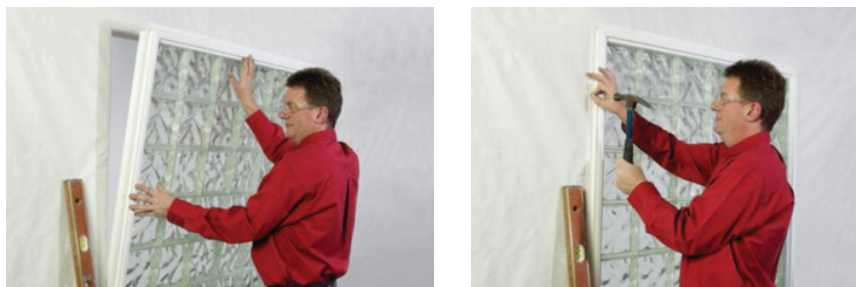


# CRYSTALOK™

## GLASS BLOCK WINDOWS

## INSTALLATION INSTRUCTIONS



1. Set the window into the rough opening from the outside with the nailing fin overlapping the exterior sheathing. Make sure that the weep holes are at the bottom.

2. Use a sealant appropriate for the existing materials and building conditions, approved by the sealant manufacturer and conforming to AAMA 800. Apply a continuous and generous bead between the exterior sheathing and the nailing fin in line with the pre-punched nailing holes. Press the nailing fin into the sealant prior to nailing.

3. Center the window in the rough opening and level it by placing shims at the sill near the corners and every 16" across the sill. Plumb the jambs of the window, and shim as necessary.

4. Secure the window into the opening with 2" galvanized roofing nails; drive a nail into every pre-punched hole. Apply sealant over each nail head.

5. Apply self-sealing flashing tape and building paper according to the manufacturers instructions or as specified in AAMA 2400-02.

